



# CHU02-05-21.dat.channel.1

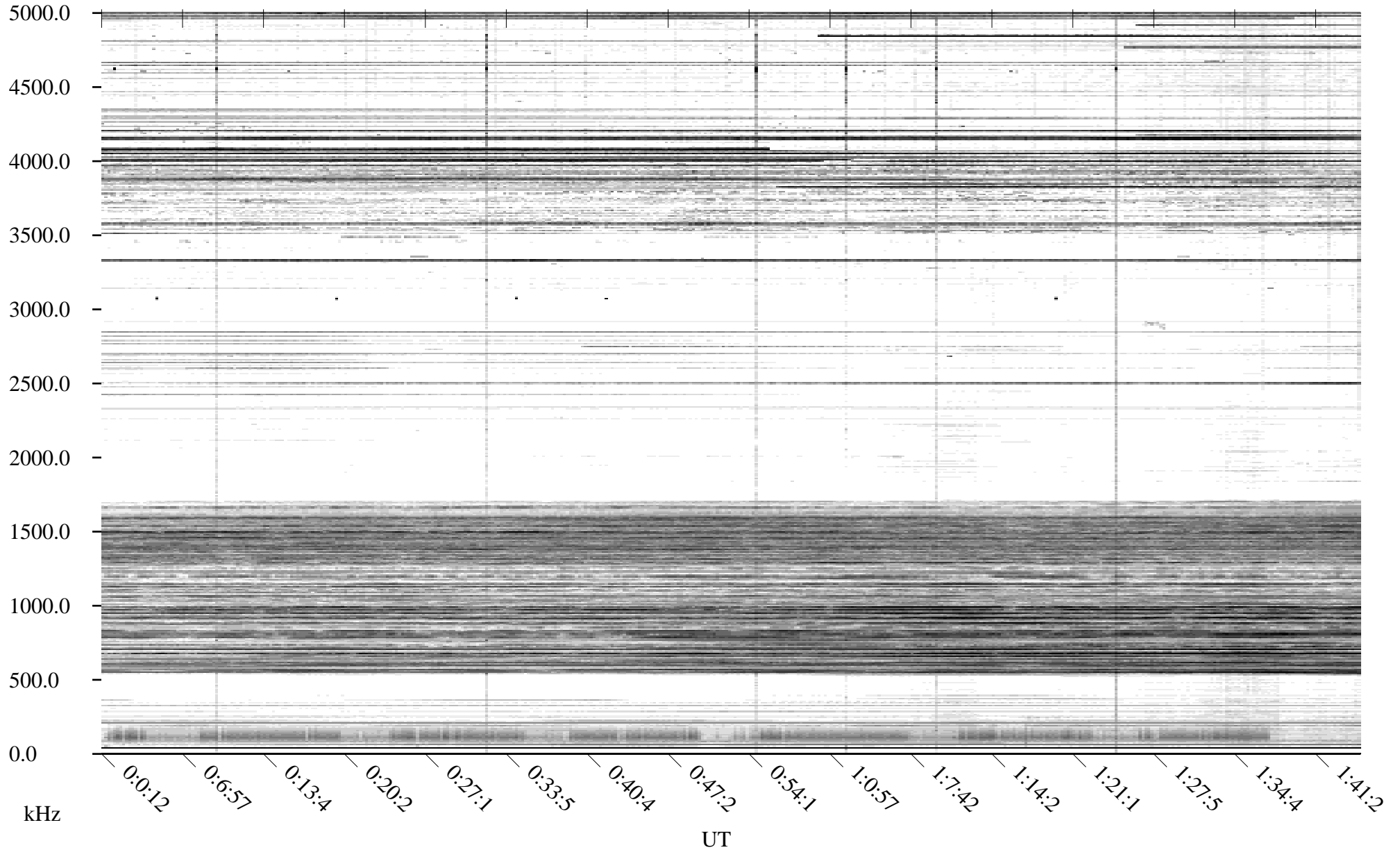
Linear Scale

Black = -100

White = -500

detail

Page 1



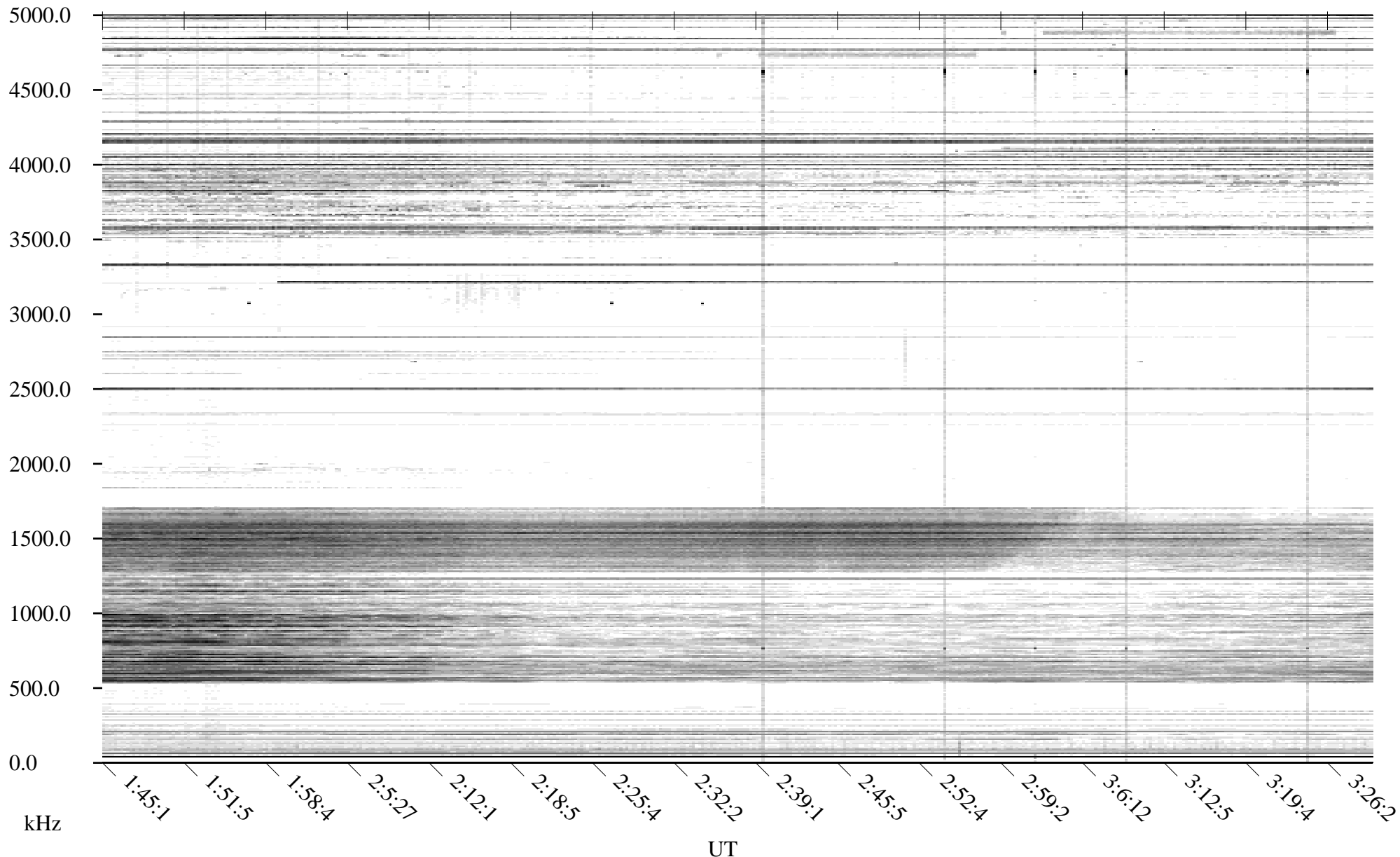


# CHU02-05-21.dat.channel.1

Linear Scale    Black = -100    White = -500

detail

Page 2

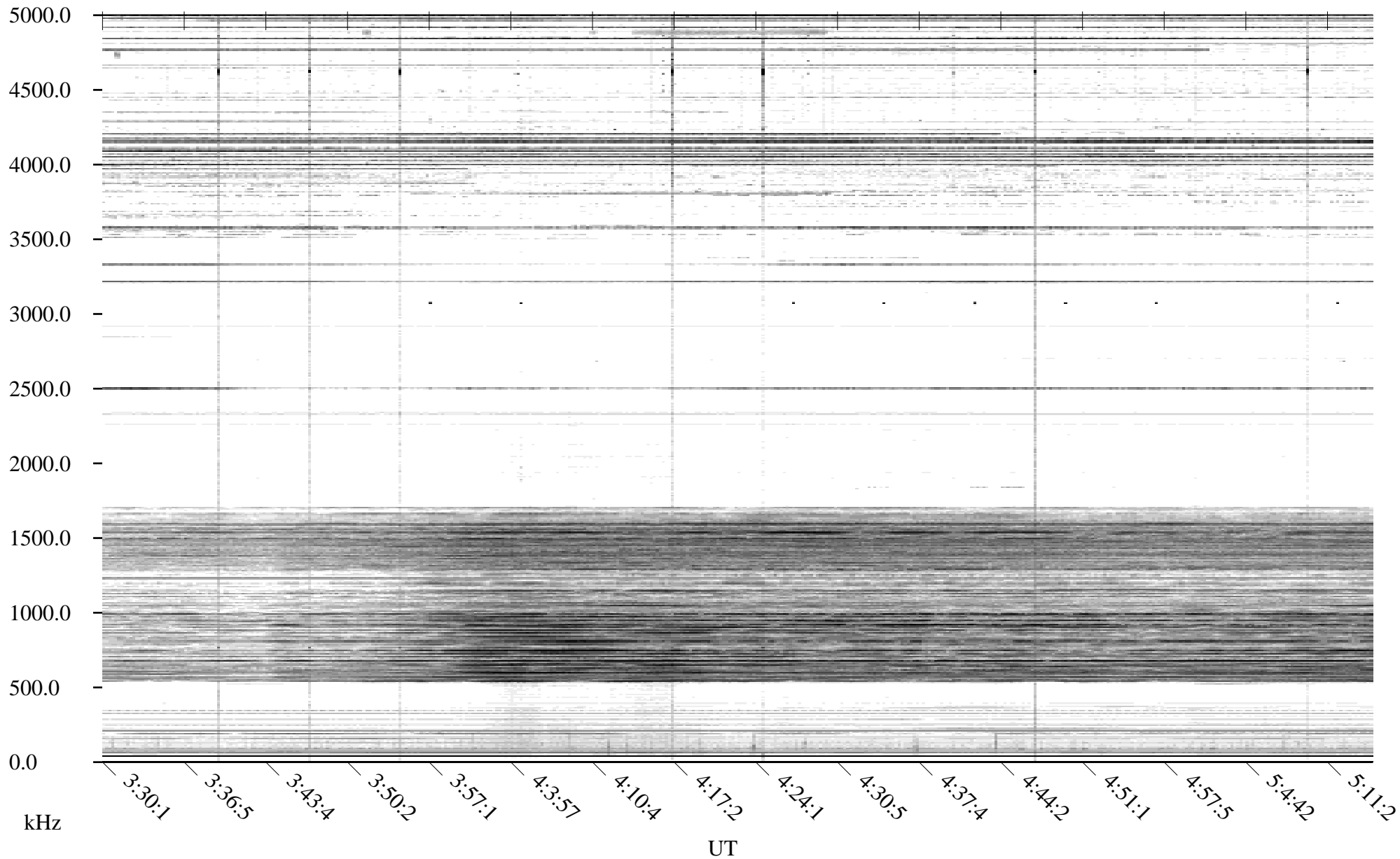




# CHU02-05-21.dat.channel.1

Linear Scale    Black = -100    White = -500

detail

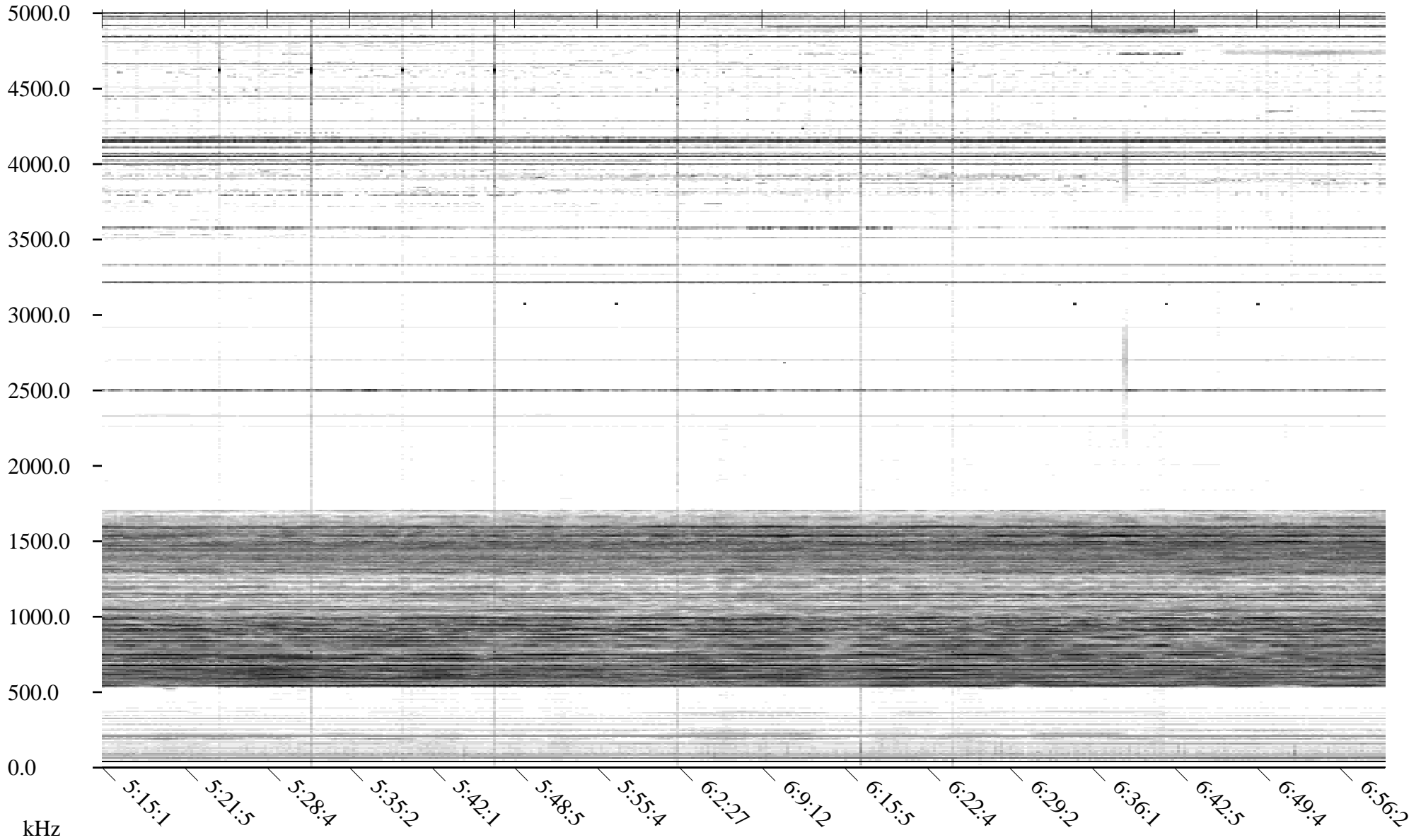




# CHU02-05-21.dat.channel.1

Linear Scale    Black = -100    White = -500

detail



UT

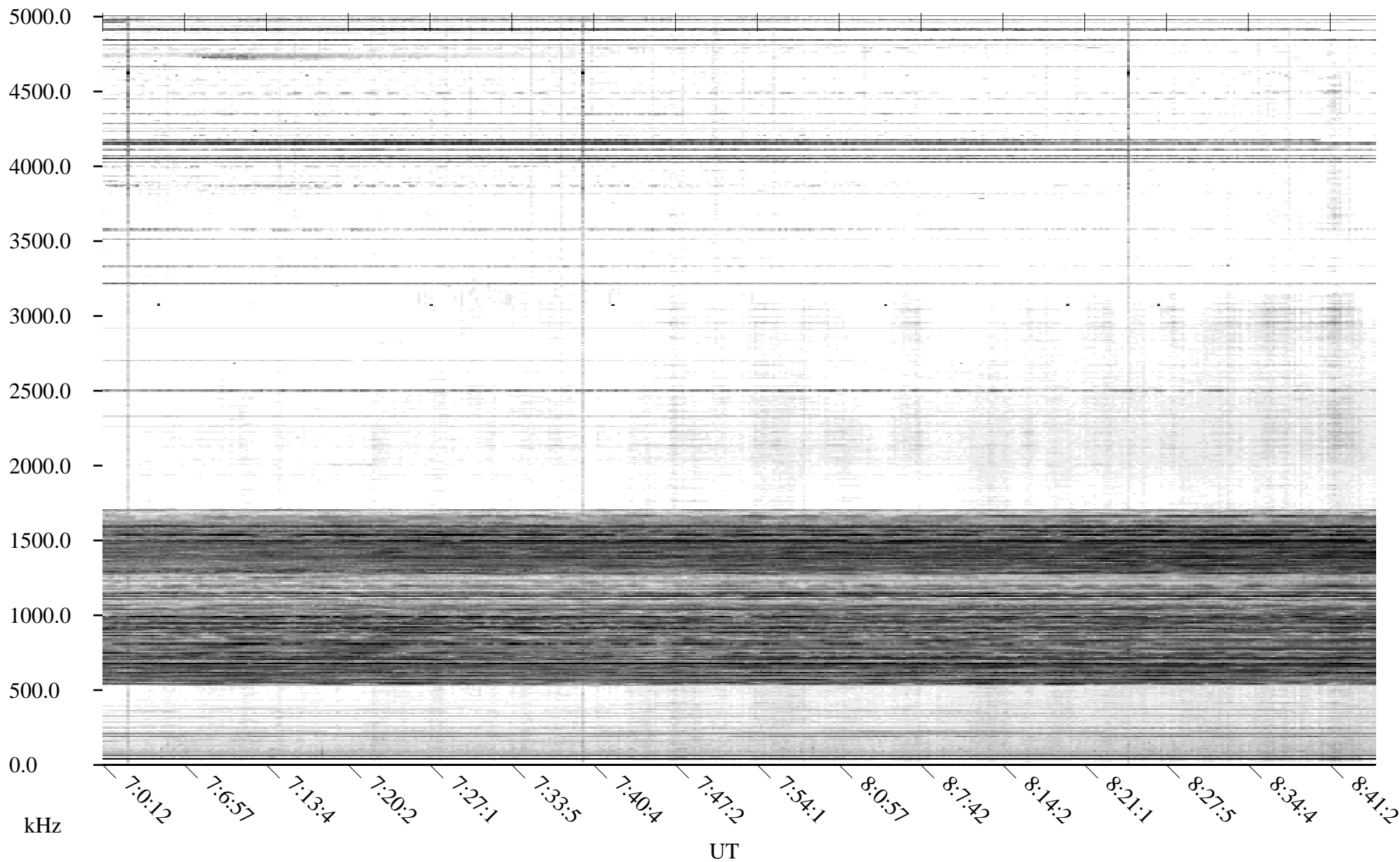
kHz



# CHU02-05-21.dat.channel.1

Linear Scale    Black = -100    White = -500

detail





# CHU02-05-21.dat.channel.1

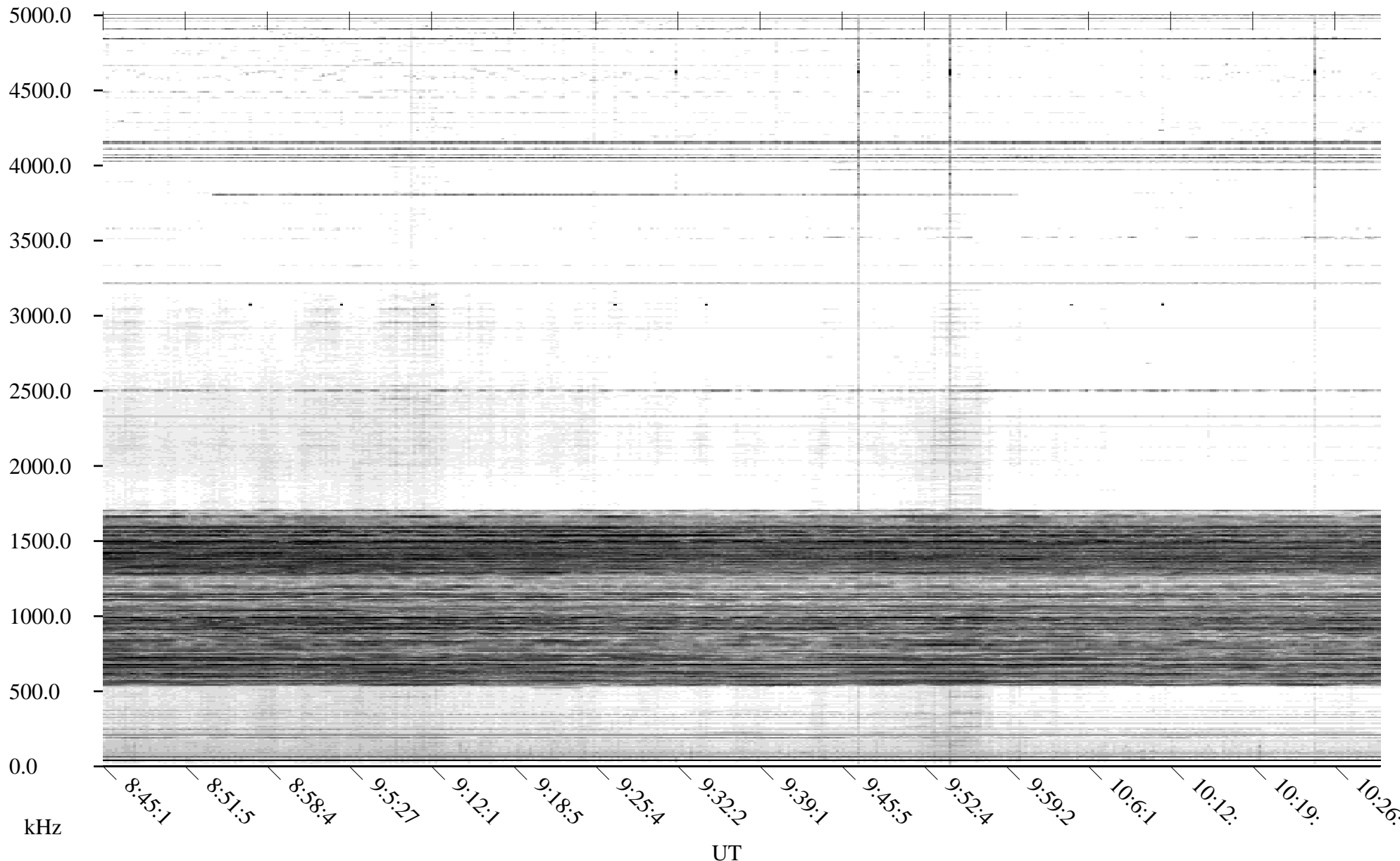
Linear Scale

Black = -100

White = -500

detail

Page 6





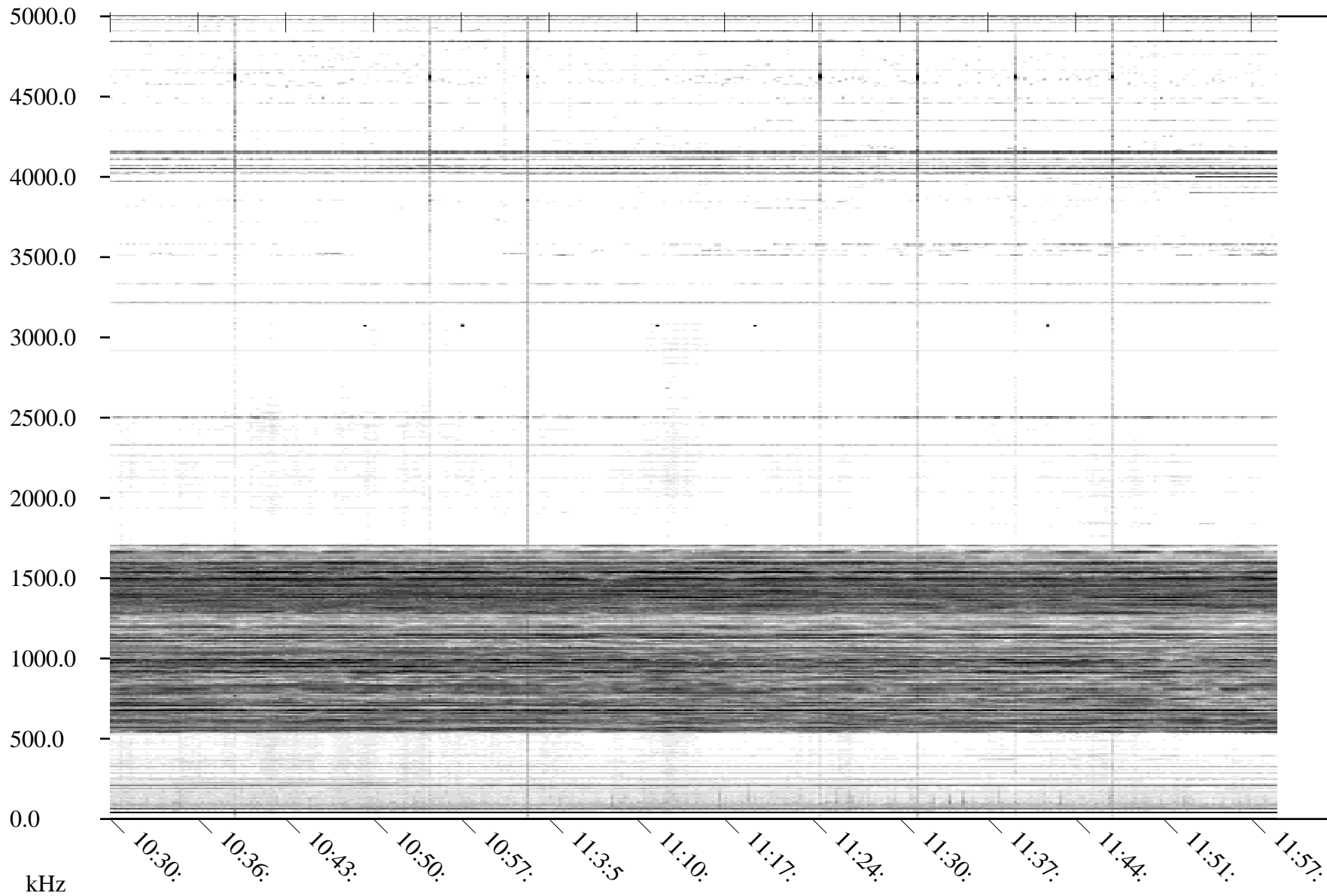
# CHU02-05-21.dat.channel.1

Linear Scale

Black = -100

White = -500

detail



kHz

UT