



# CHU08-28-21.dat.channel.0

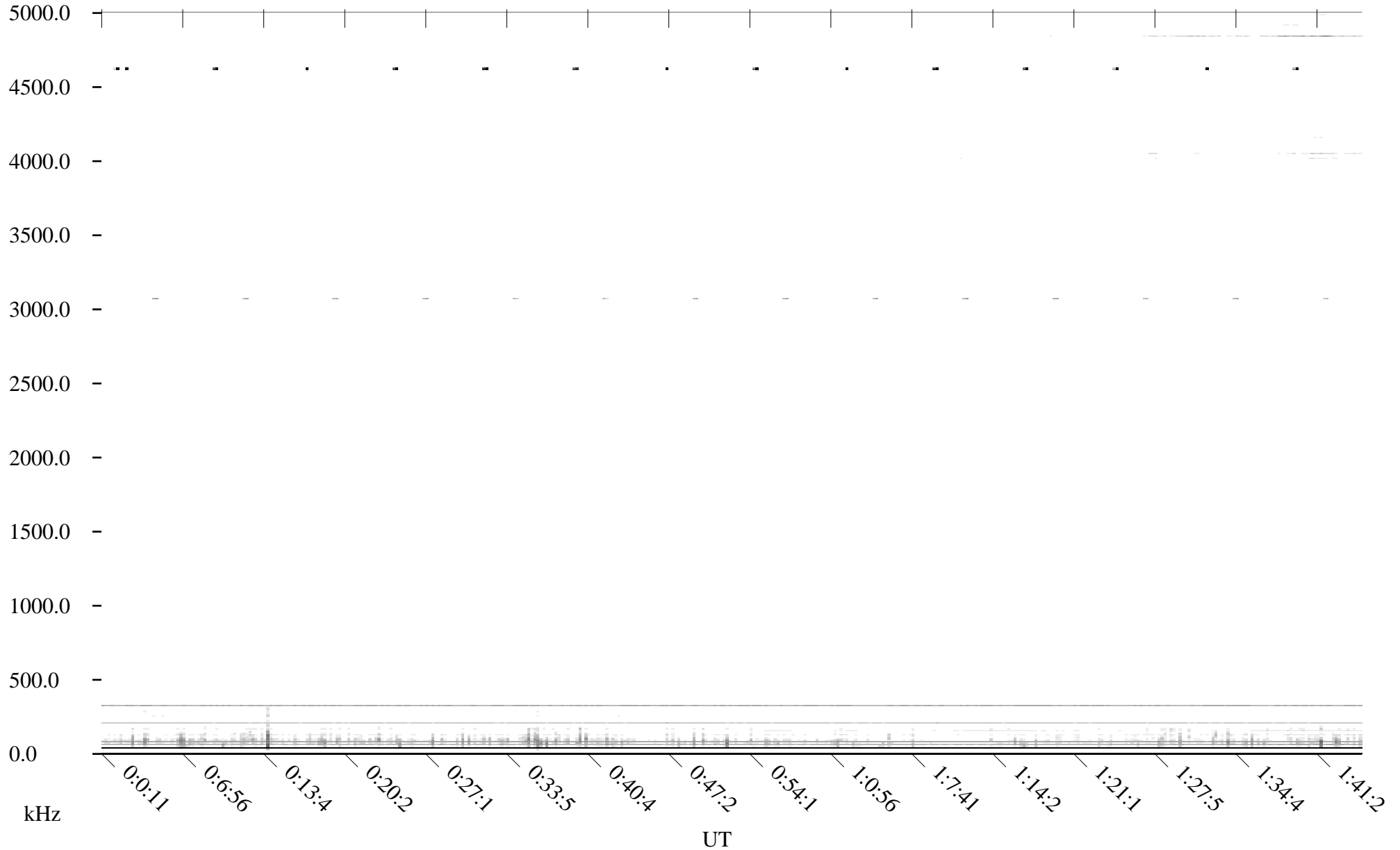
Linear Scale

Black = -100

White = -500

detail

Page 1





# CHU08-28-21.dat.channel.0

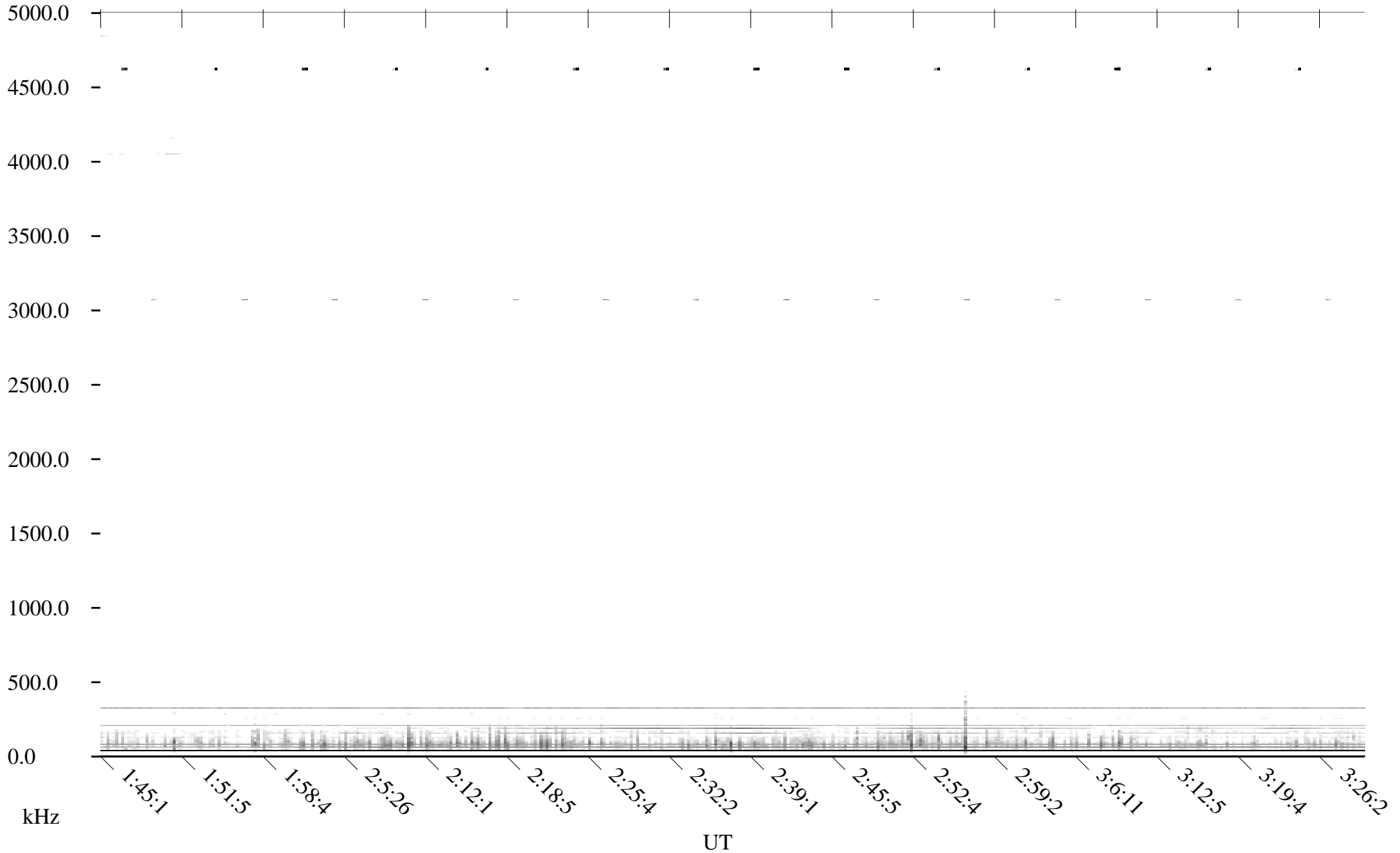
Linear Scale

Black = -100

White = -500

detail

Page 2





# CHU08-28-21.dat.channel.0

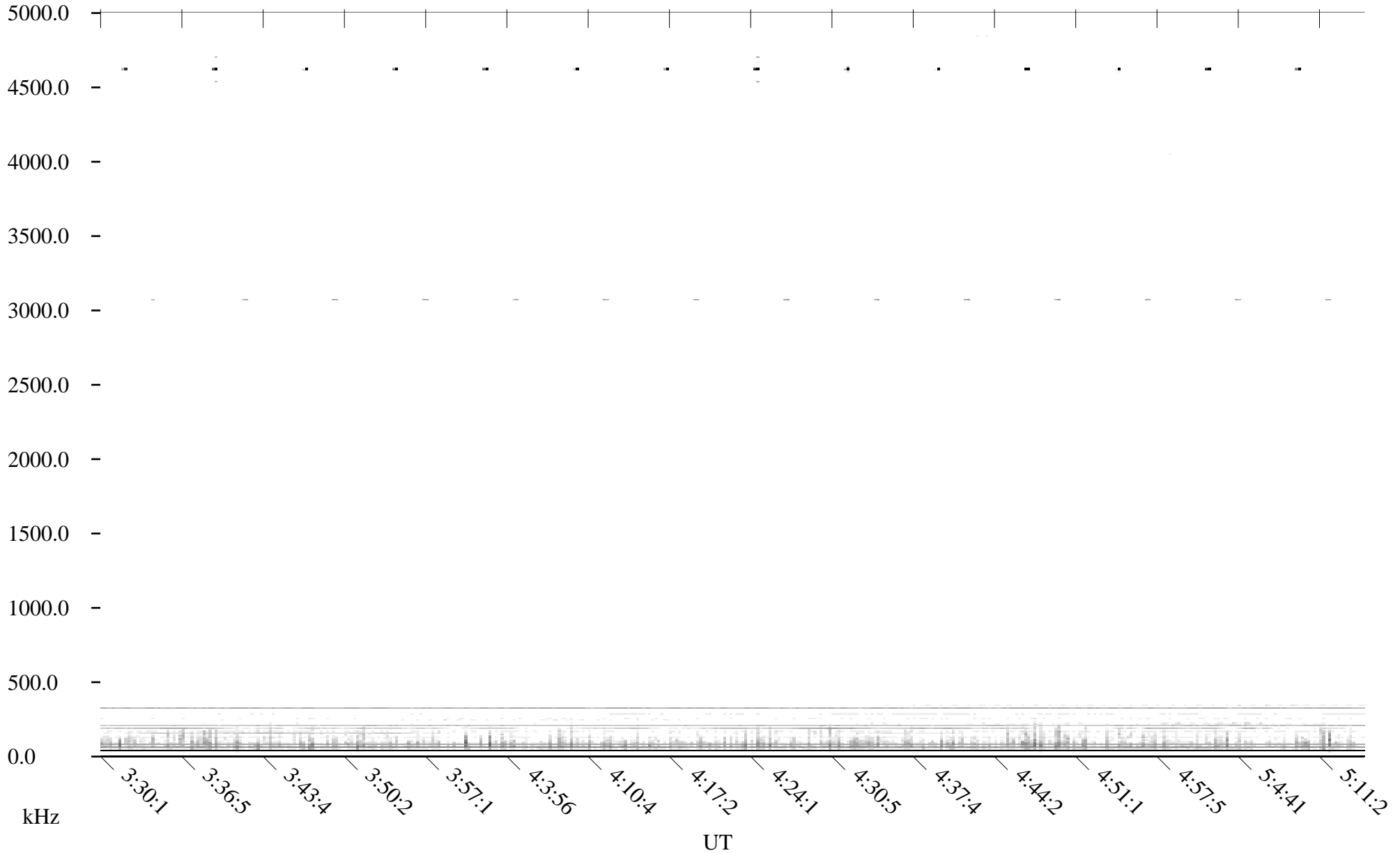
Linear Scale

Black = -100

White = -500

detail

Page 3





# CHU08-28-21.dat.channel.0

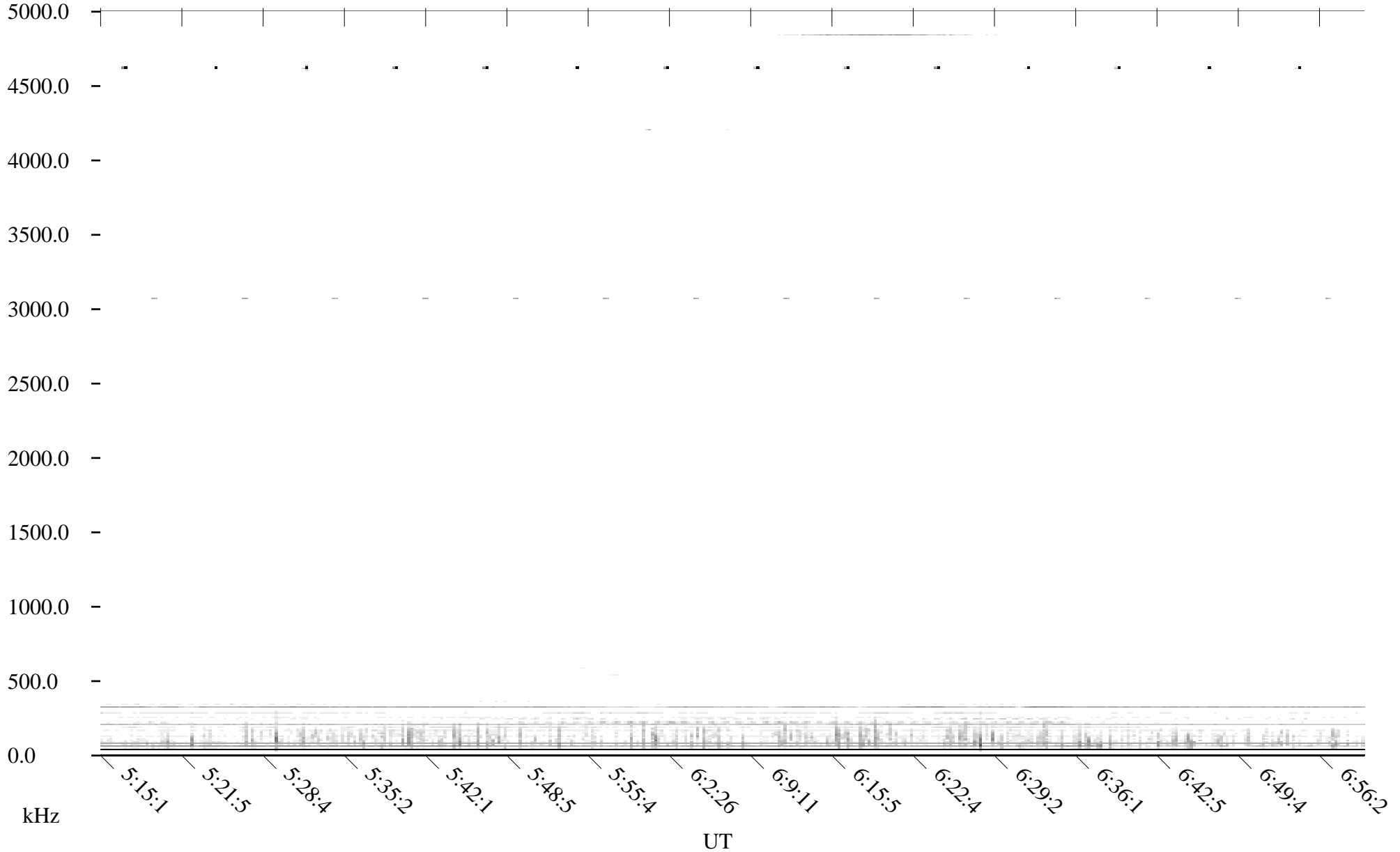
Linear Scale

Black = -100

White = -500

detail

Page 4





# CHU08-28-21.dat.channel.0

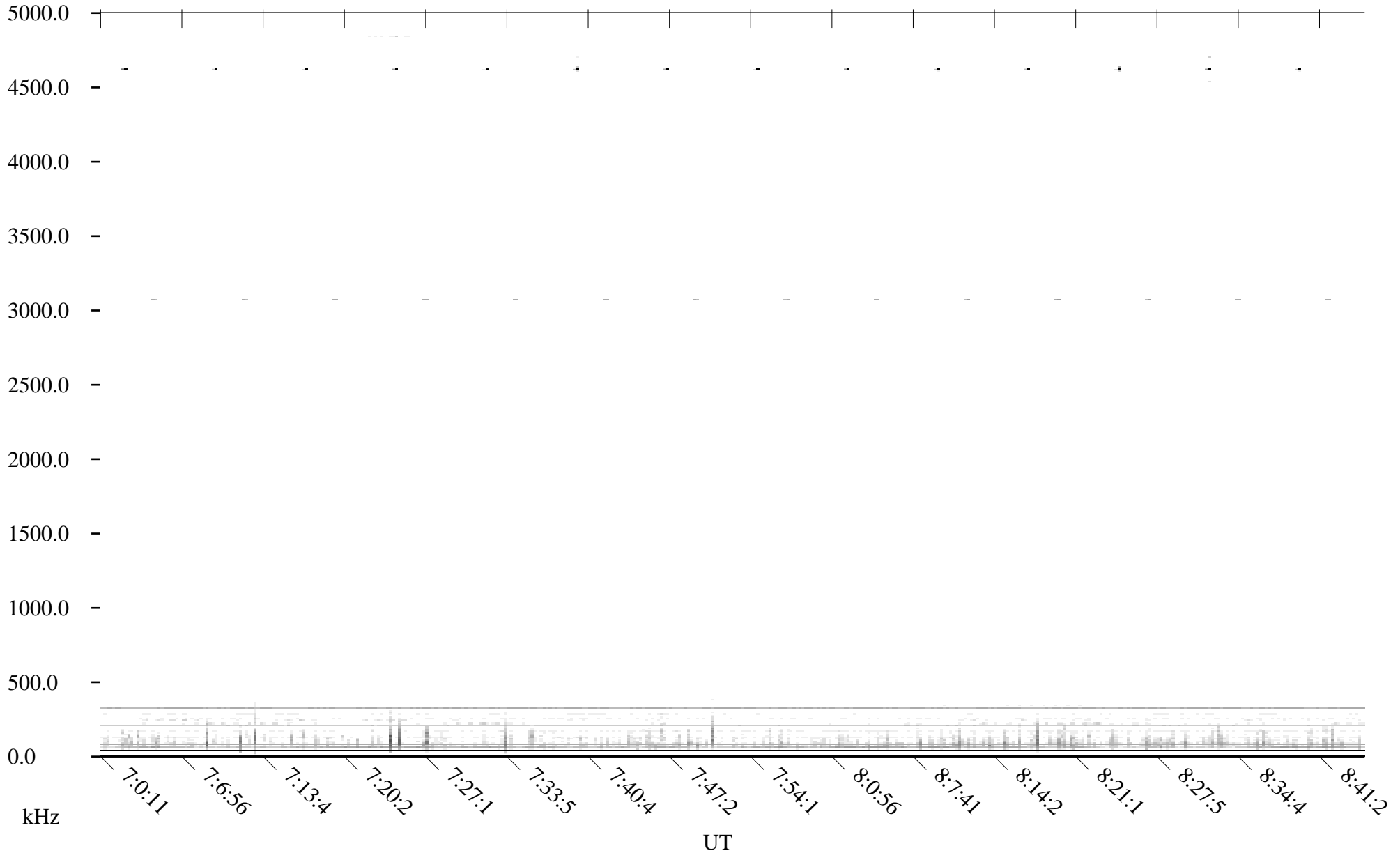
Linear Scale

Black = -100

White = -500

detail

Page 5





# CHU08-28-21.dat.channel.0

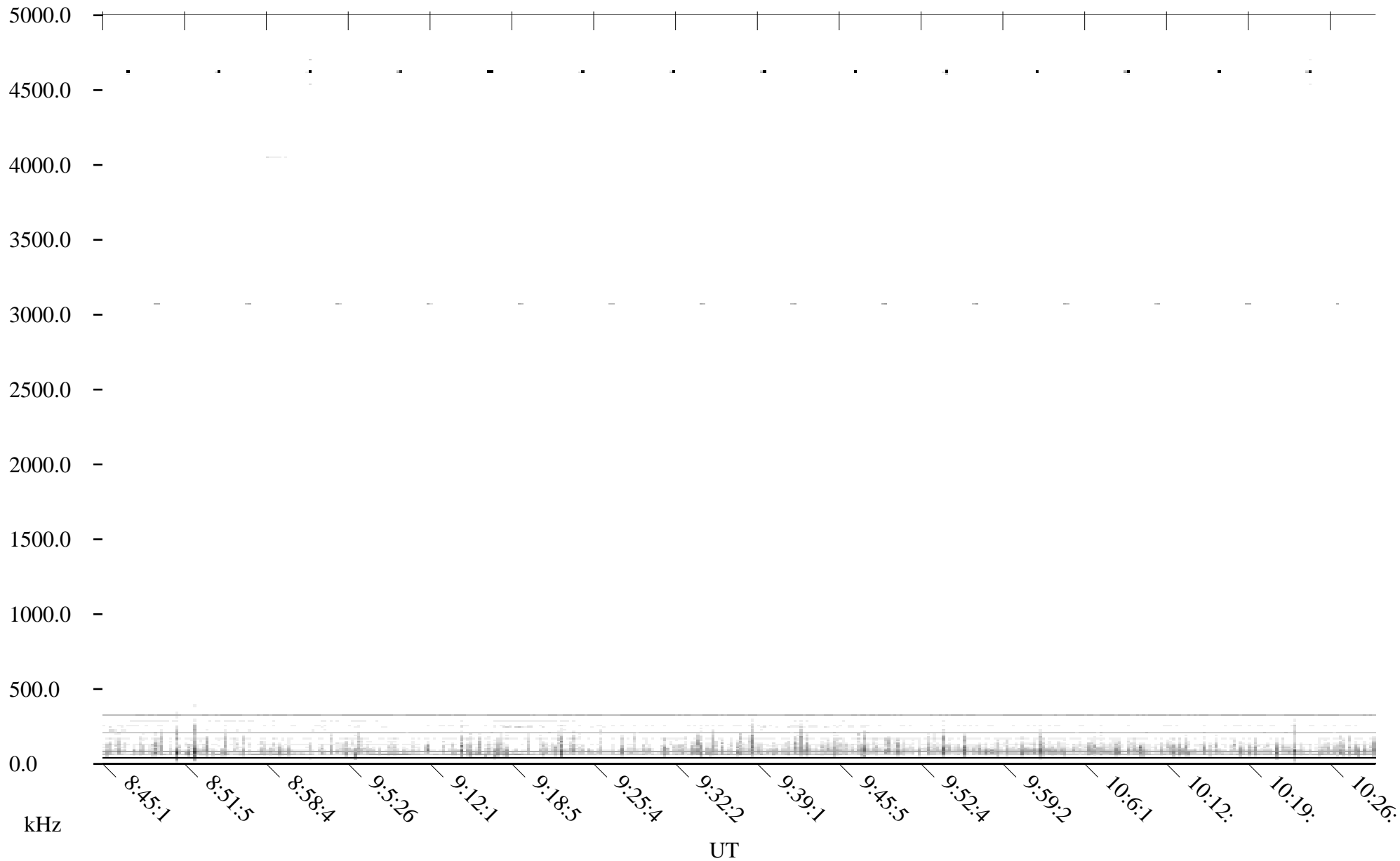
Linear Scale

Black = -100

White = -500

detail

Page 6





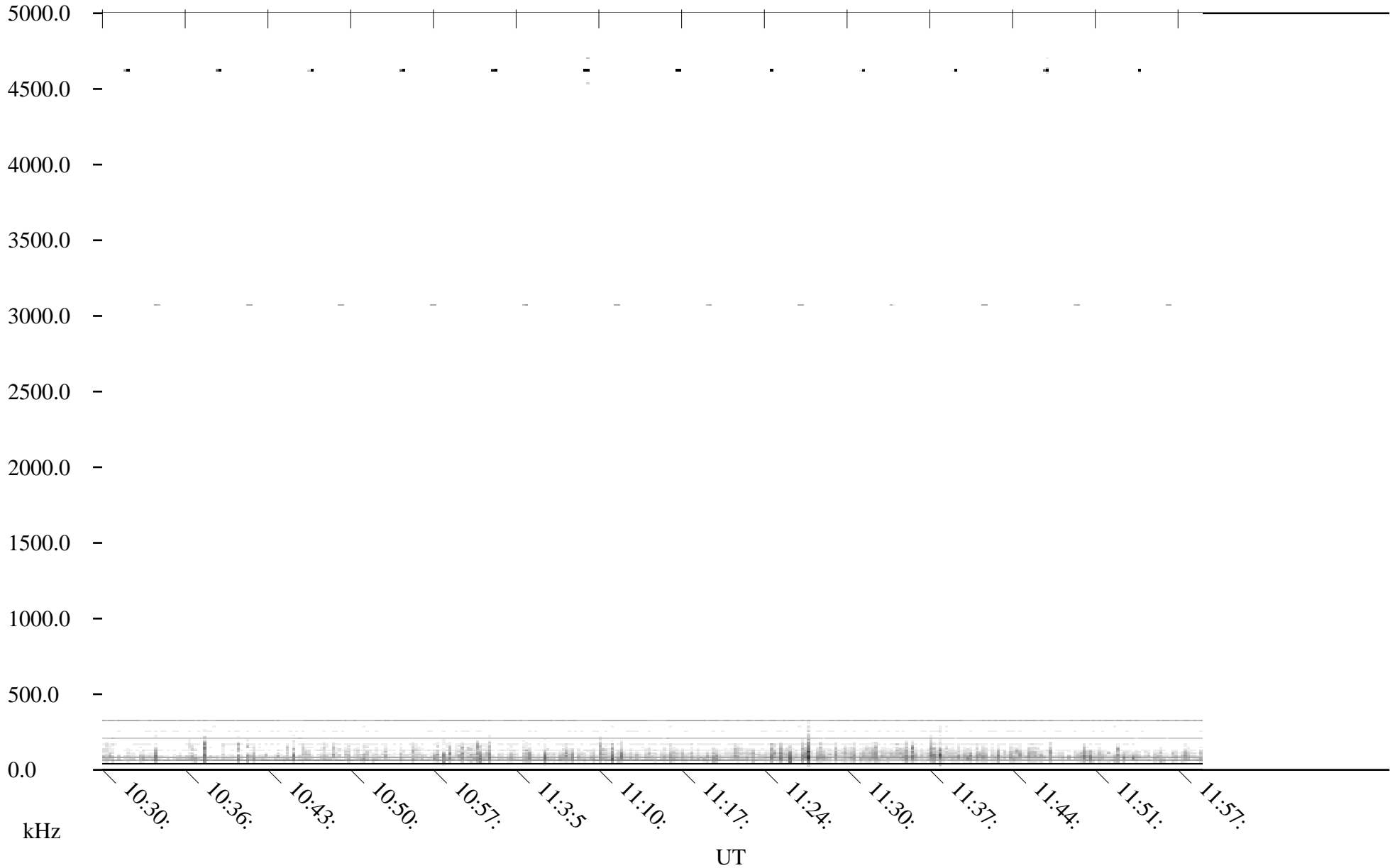
# CHU08-28-21.dat.channel.0

Linear Scale

Black = -100

White = -500

detail



kHz

UT