



# CHU10-12-21.dat.channel.2

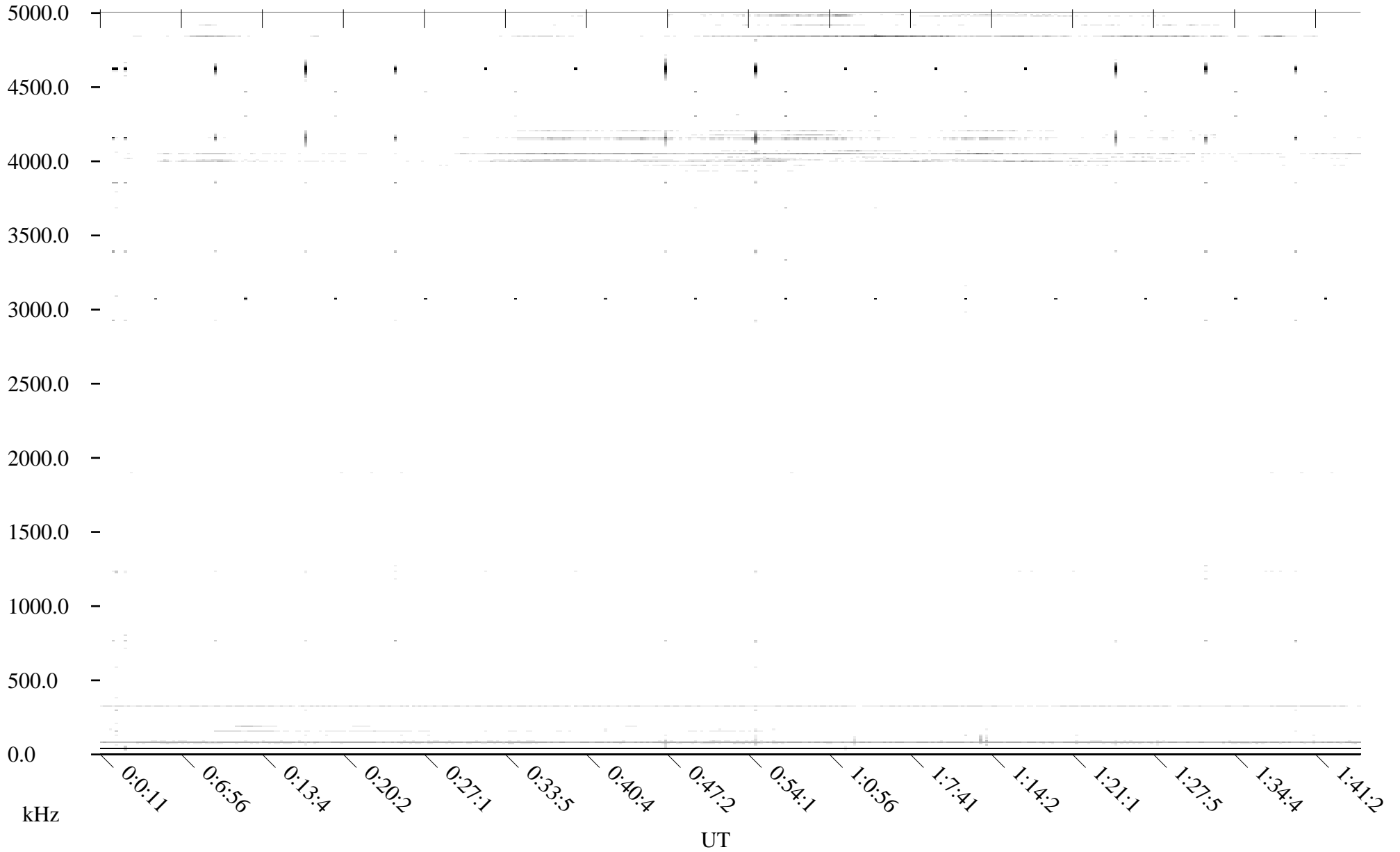
Linear Scale

Black = -100

White = -500

detail

Page 1





# CHU10-12-21.dat.channel.2

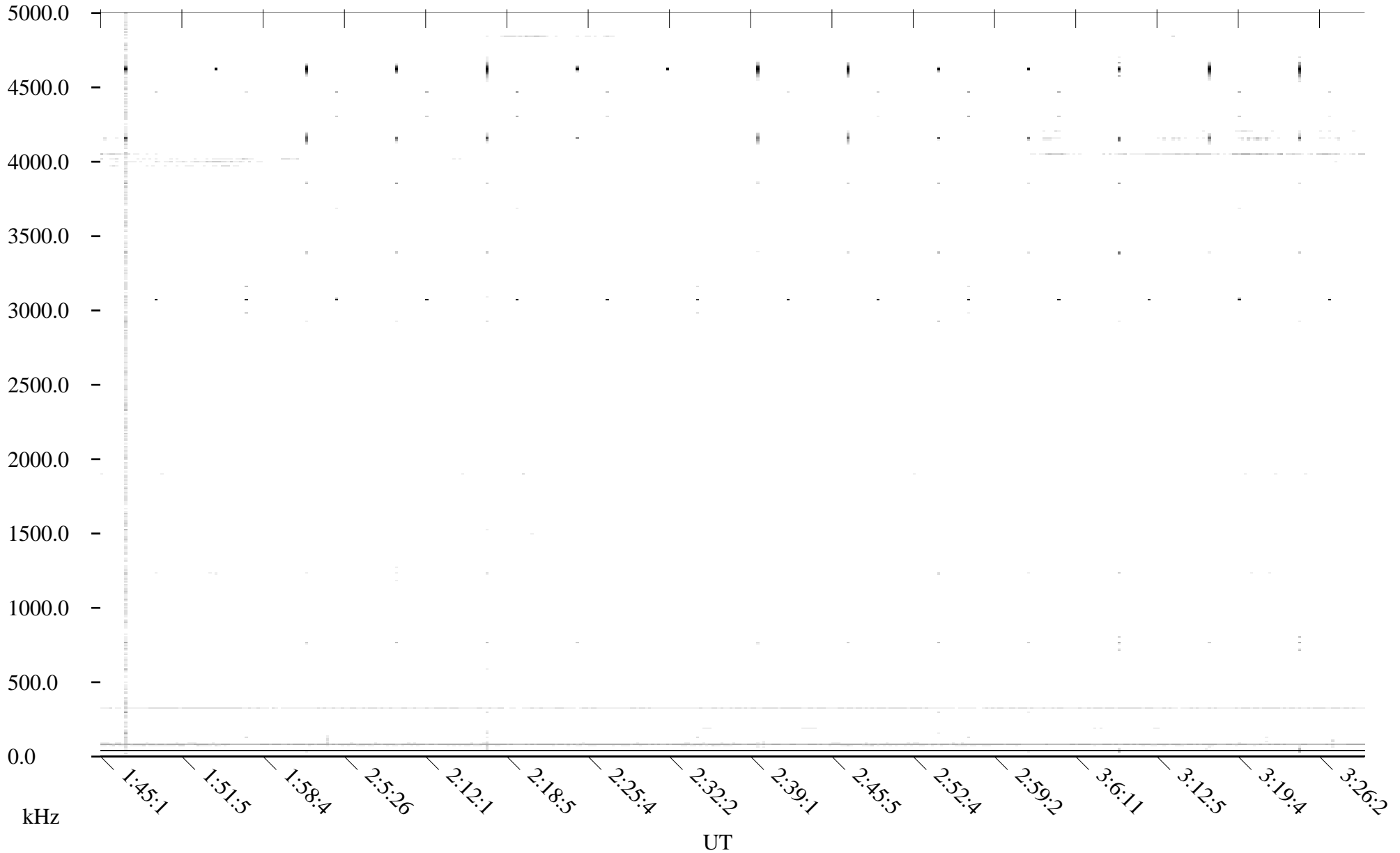
Linear Scale

Black = -100

White = -500

detail

Page 2





# CHU10-12-21.dat.channel.2

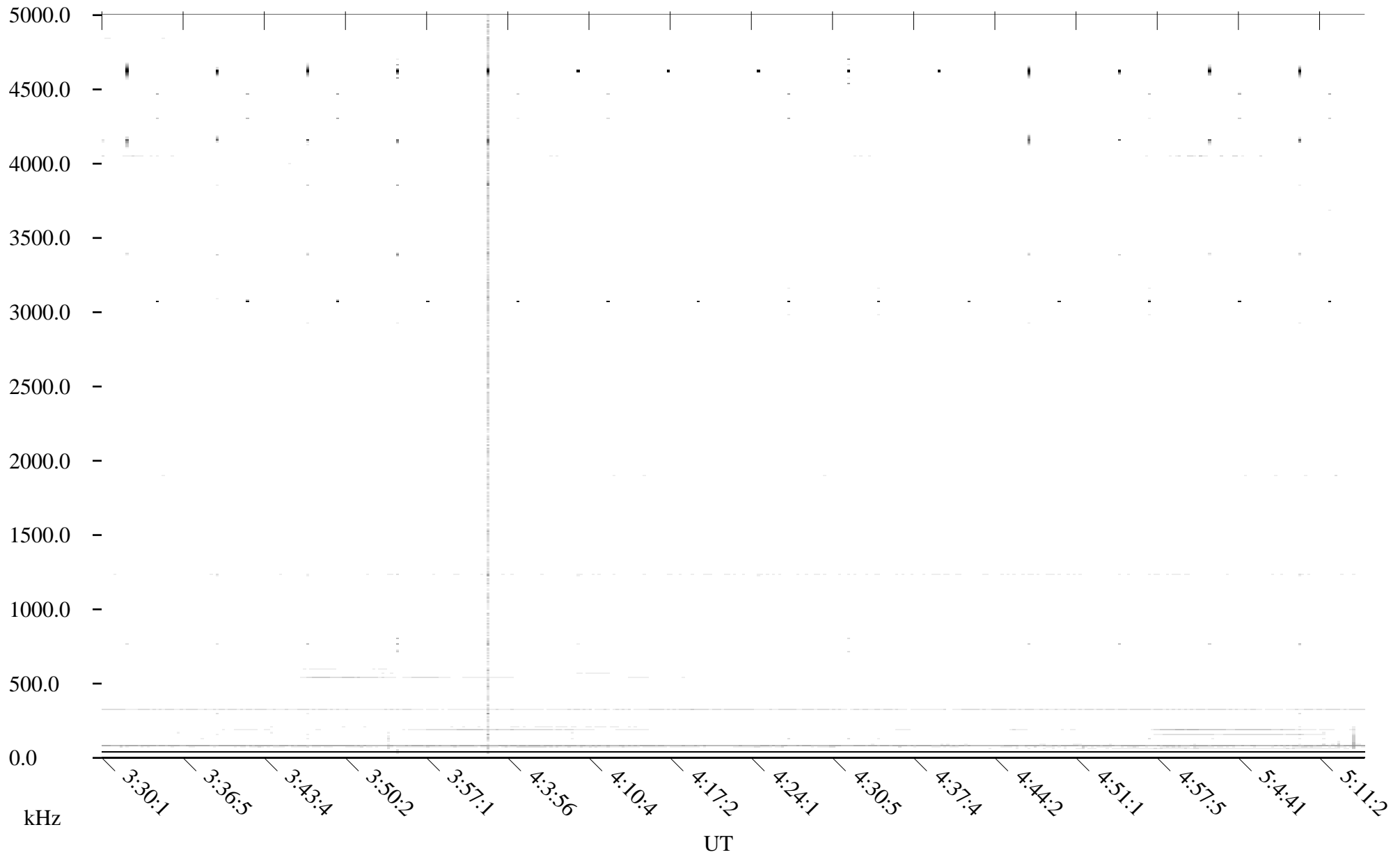
Linear Scale

Black = -100

White = -500

detail

Page 3





# CHU10-12-21.dat.channel.2

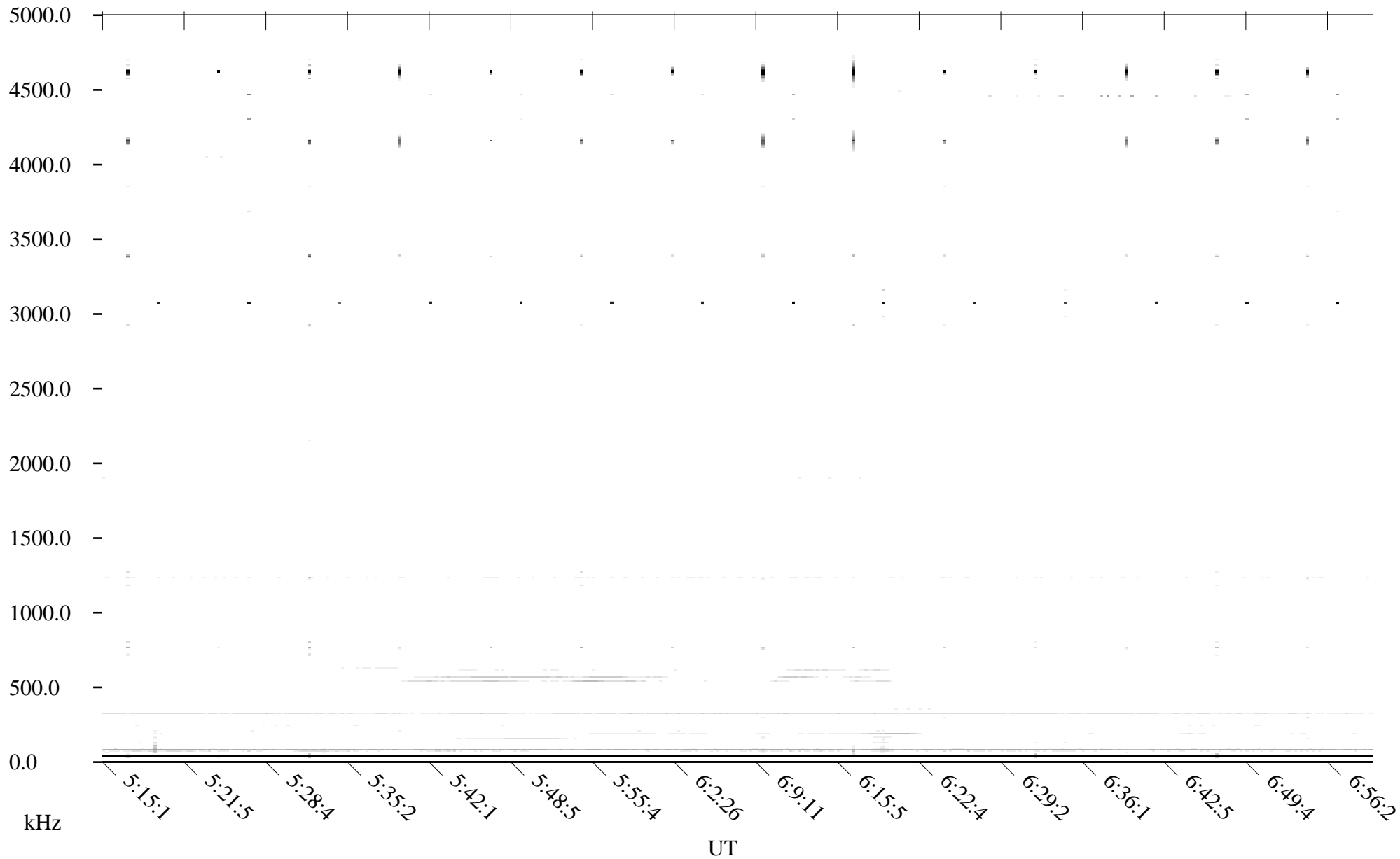
Linear Scale

Black = -100

White = -500

detail

Page 4





# CHU10-12-21.dat.channel.2

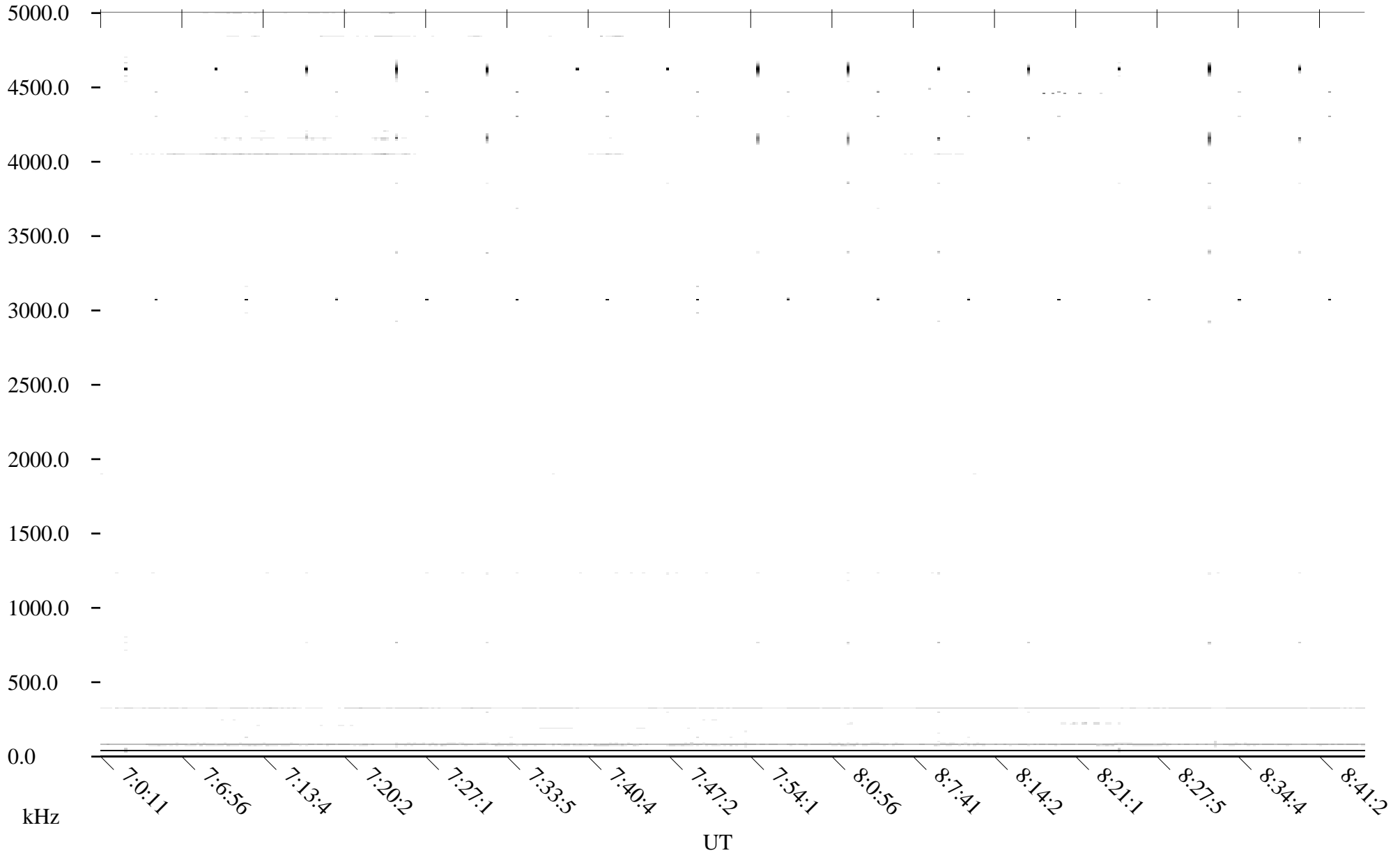
Linear Scale

Black = -100

White = -500

detail

Page 5





# CHU10-12-21.dat.channel.2

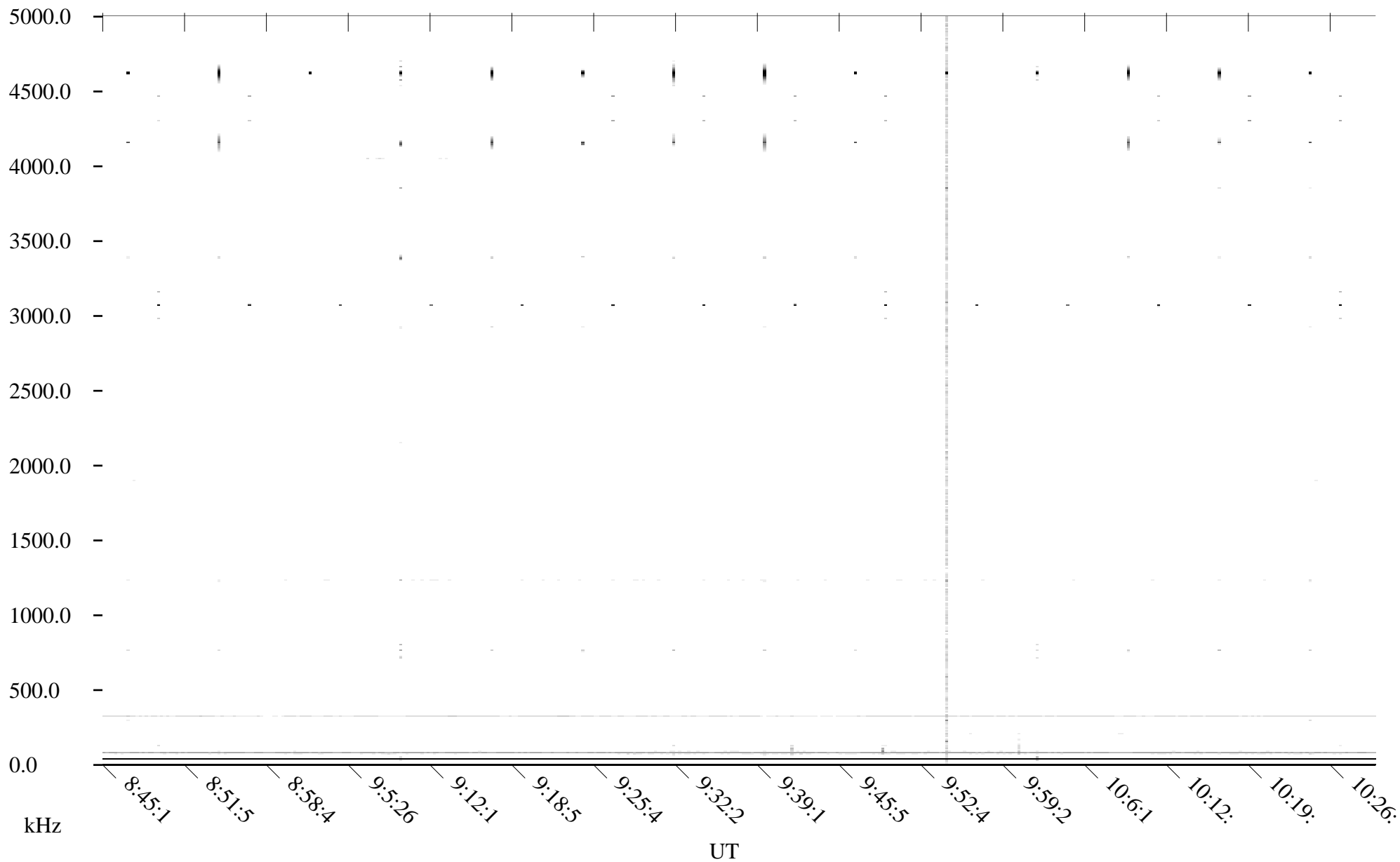
Linear Scale

Black = -100

White = -500

detail

Page 6





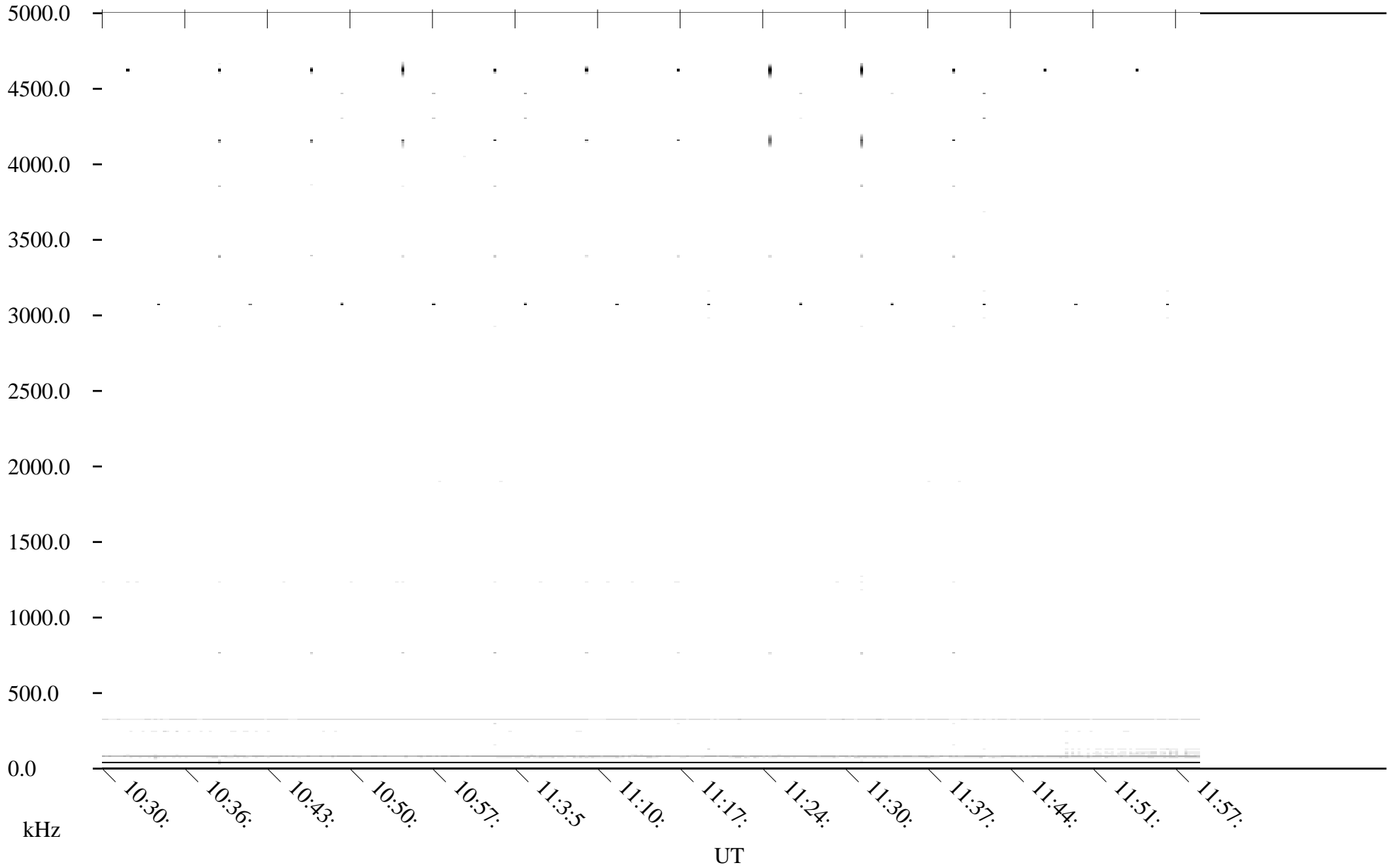
# CHU10-12-21.dat.channel.2

Linear Scale

Black = -100

White = -500

detail



kHz

UT